

TIP SHEET: USProcedural (CPT 76937, 76942, 75989, 76930)

Indication: Procedural ultrasound to visualize for the following procedure: (central venous line, tube thoracostomy, lumbar puncture, etc)

Questions to ask yourself:

- Artery AND Vein visualized: YES or NO
- Compressible Vein: YES or NO
- Access transduced to be vein prior to dilation: YES or NO
- Line confirmed in Vein with ultrasound (must have image below): YES or NO
- Optional: Evaluation of Pneumothorax: Seashore sign or Stratosphere sign

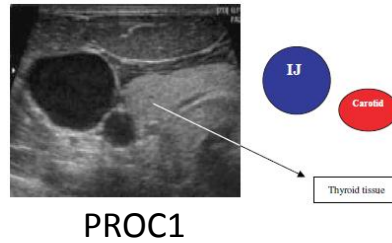
Images to obtain:

Probe: High Frequency Linear Array

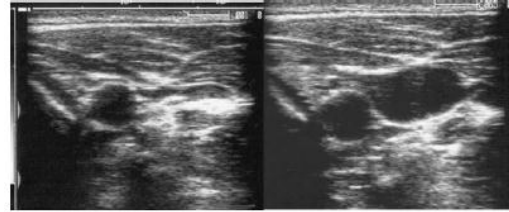
- PROC1 – Vein and Artery visualized
- PROC2 – Vein collapse image
- PROC3 – Needle, short introducer catheter, or guidewire in vein (preference needle)
- PROC4 (Optional) – M-mode image showing Seashore or Stratosphere sign

Scanning Tips:

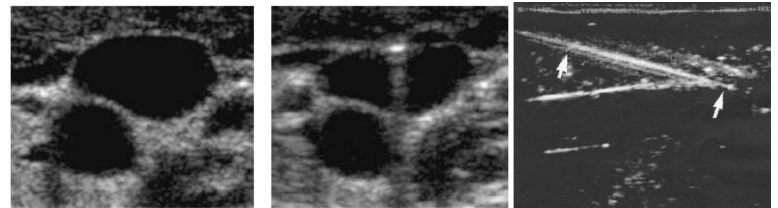
- Tilt probe towards needle in short axis view
- Remember to image the needle tip not the shaft
- Be sure to check for depth of all structures
- If trying long axis approach, remember if you lose needle tip, move the needle tip not the full view you already have of the vein
- For tips on procedural lung ultrasound, please see lung tip sheet



PROC1



PROC2



PROC3



PROC4

