

Tip Sheet: .USAorta (CPT 76775)

Indication: Ultrasound to determine the presence of abdominal aortic aneurysm

Questions to Ask yourself:

4 views required (measured from outer wall to outer wall) and what is measured size? Is the abdominal aorta greater than 3 cm in diameter? Are the iliac arteries greater than 1.5 cm in diameter?

- Transverse Proximal
- Longitudinal Proximal
- Transverse Distal
- Longitudinal Distal

Concern for rupture based on hemodynamic/clinical status: YES or NO
 Abnormal aorta pathology visualized: YES or NO
 Color Doppler shows any concern for dissection: YES or NO

Images you should obtain:

- AORTA1 – Transverse Proximal
- AORTA2 – Longitudinal Proximal
- AORTA3 – Transverse Distal
- AORTA4 – Longitudinal Distal
- AORTA5 – Any other abnormal visualization of aorta

Scanning Tips:

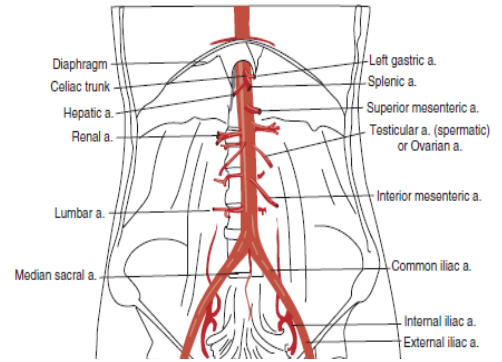
Bowel gas in the way?

Apply pressure to minimize artifact caused by bowel gas, sometimes necessary to apply constant pressure to force peristalsis out of the field of view. If this doesn't work sometimes moving the patient into left lateral decubitus may move bowel gas away from field of view.

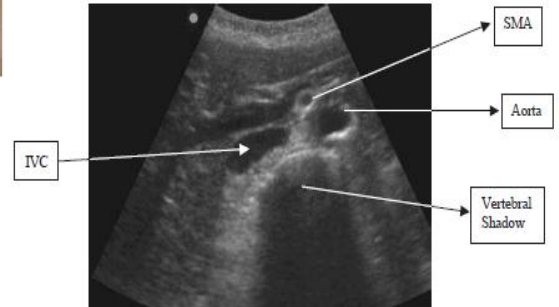
Can't see aorta at all?

Have patient move to left lateral decubitus position, or try to obtain window through the liver. Increase the depth to maximal level to identify the vertebral shadow

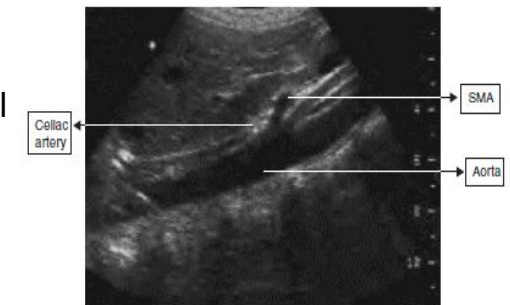
Normal anatomy



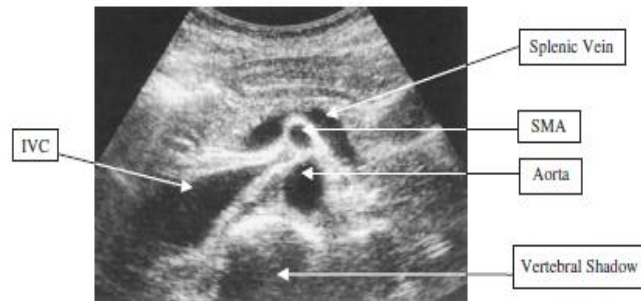
AORTA1 – Transverse Proximal



AORTA2 – Longitudinal Proximal



AORTA3 – Transverse Distal



AORTA4 – Longitudinal Distal (not pictured)



AORTA5 – Any other abnormal visualization of aorta (not pictured)